

November 27, 2025

Banking Sector Outlook

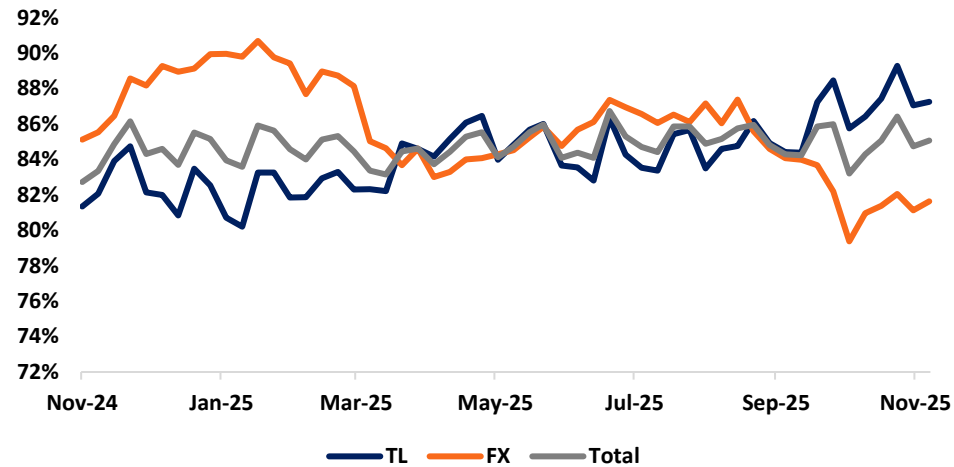
İrfan Kemal Özer

kemal.ozer@phillip.com.tr

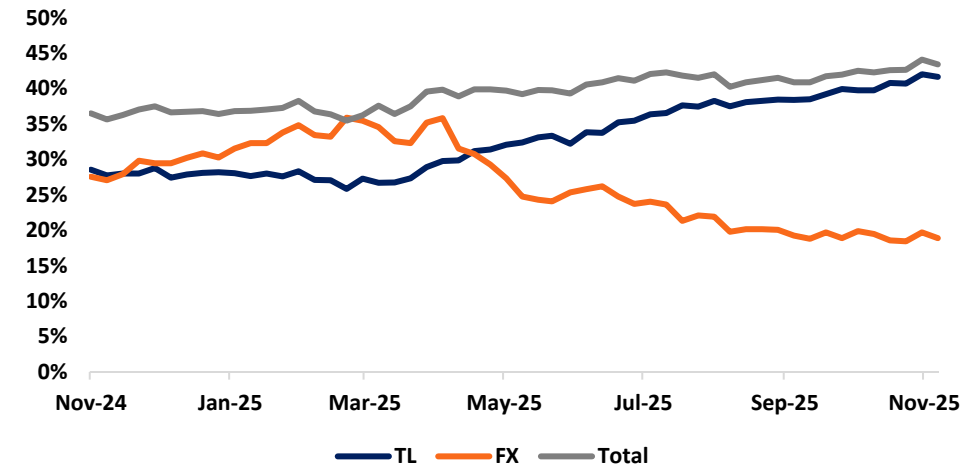
Sadrettin Bağcı

sadrettin.bagci@phillip.com.tr

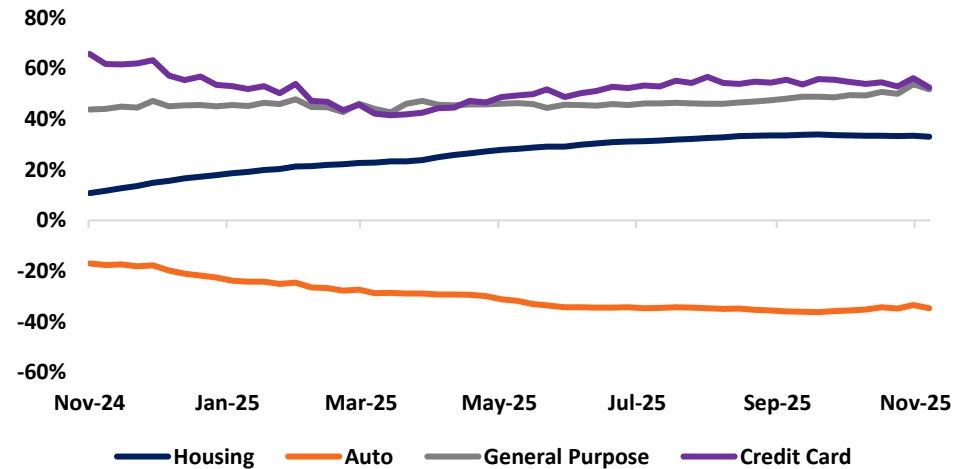
Loan to Deposit Ratio



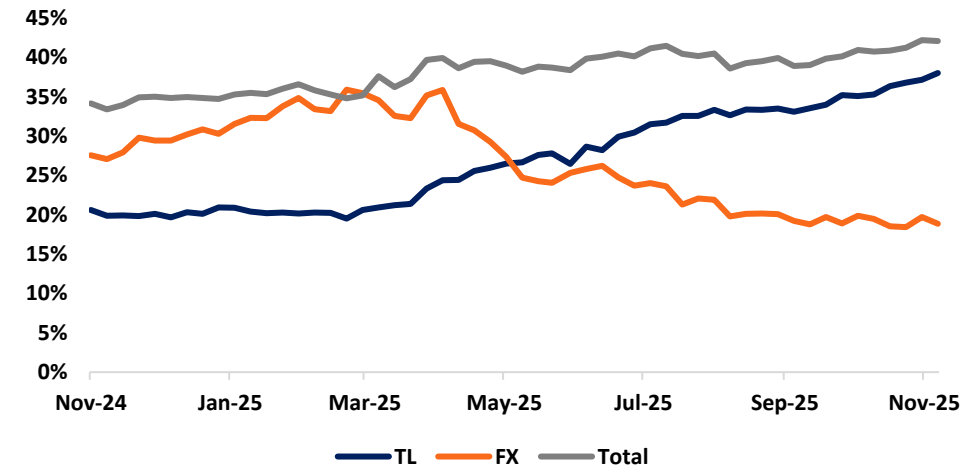
Annual Loan Growth



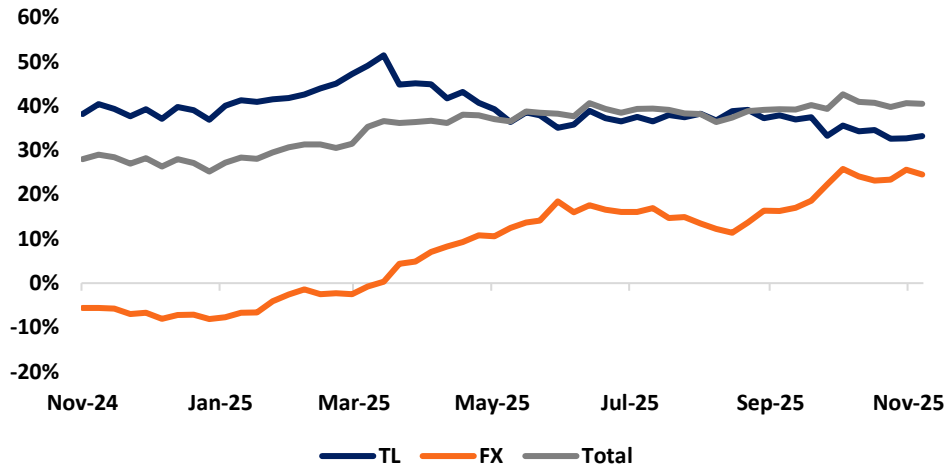
Annual Loan Growth by Type



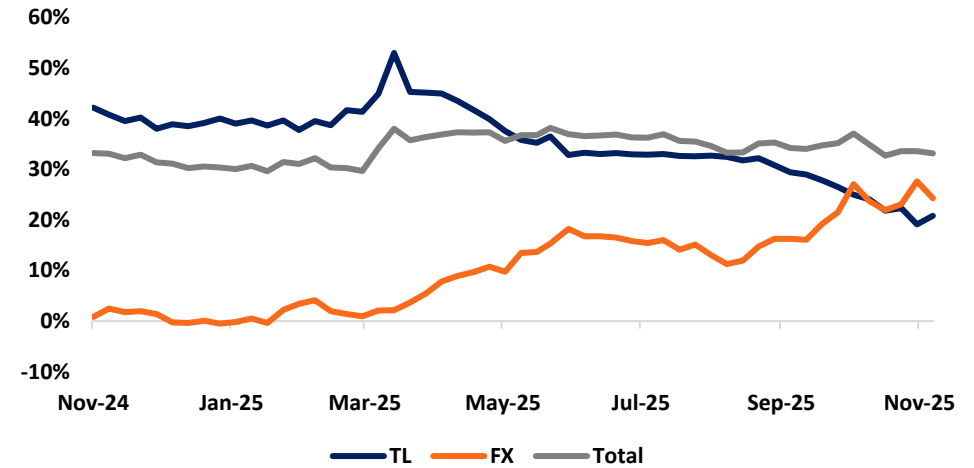
Annual Commercial Loan Growth



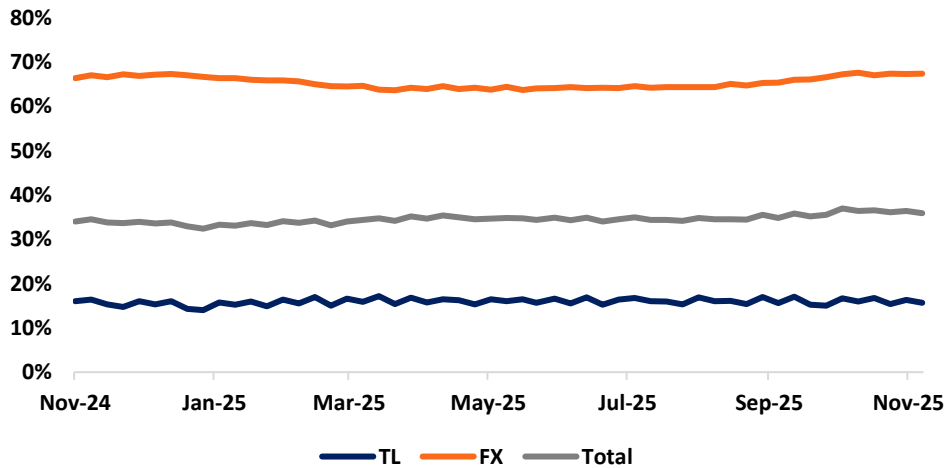
Annual Deposit Growth



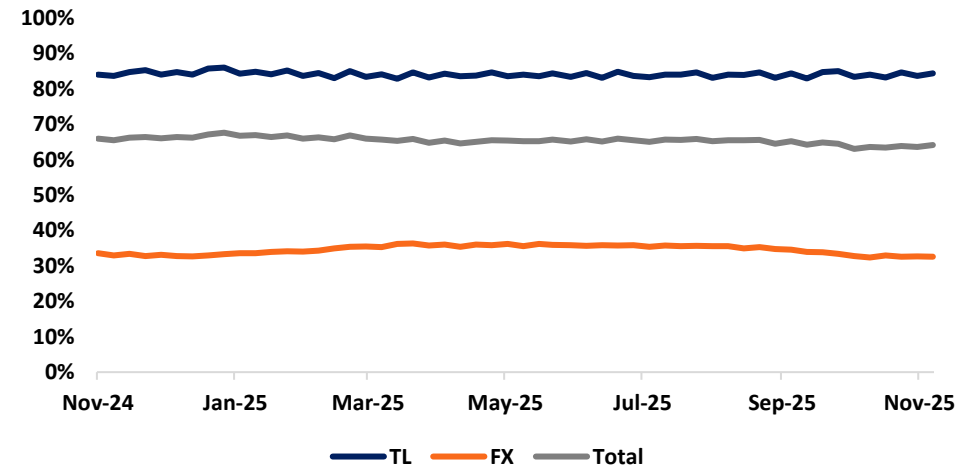
Annual Deposit Growth, Households



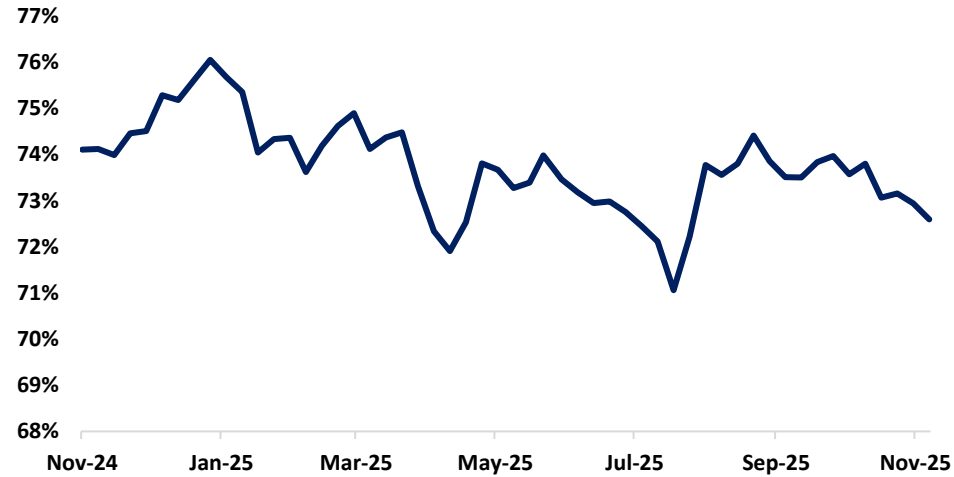
Demand Deposits / Total Deposits



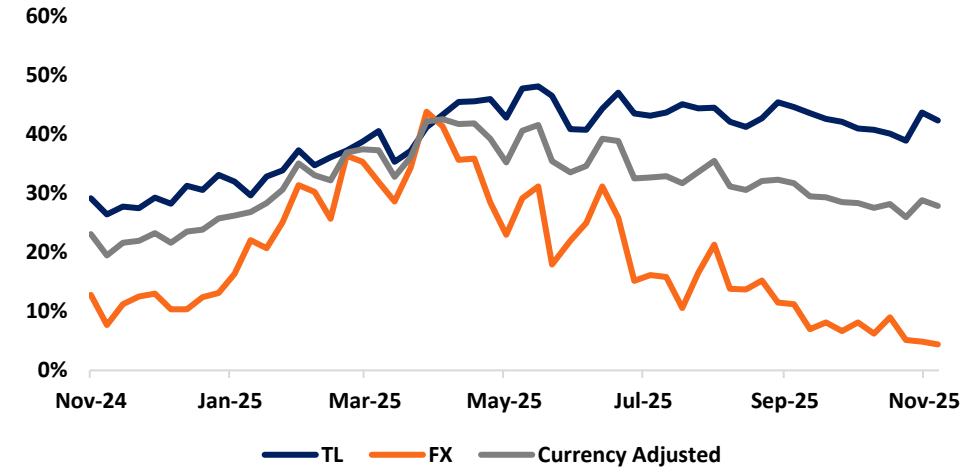
Time Deposits / Total Deposits



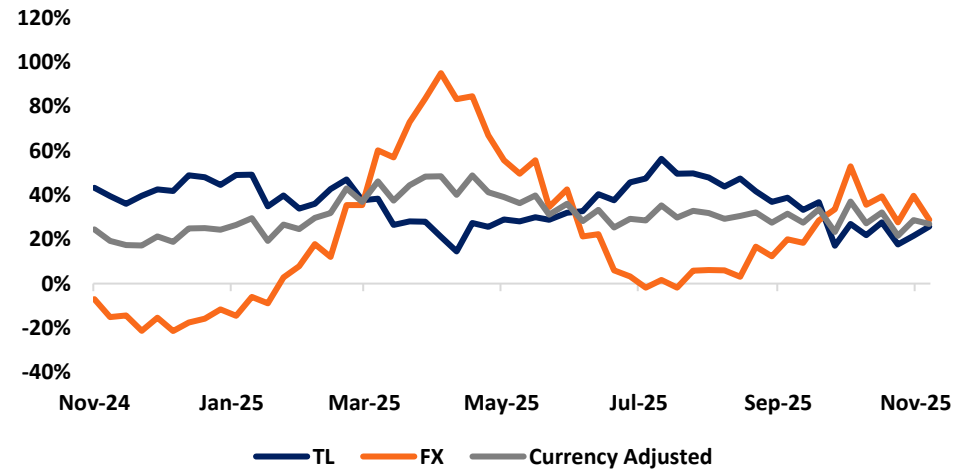
NPL Coverage Ratio



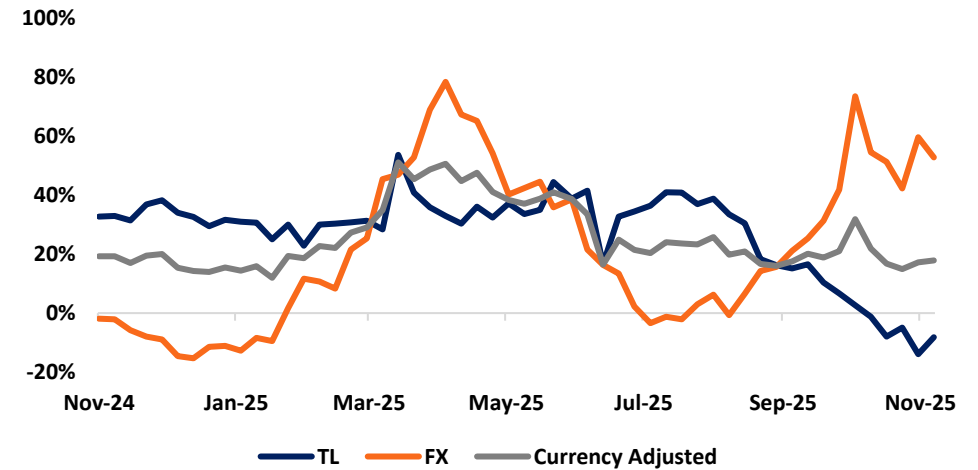
Total Loan Growth, 13w Annualized



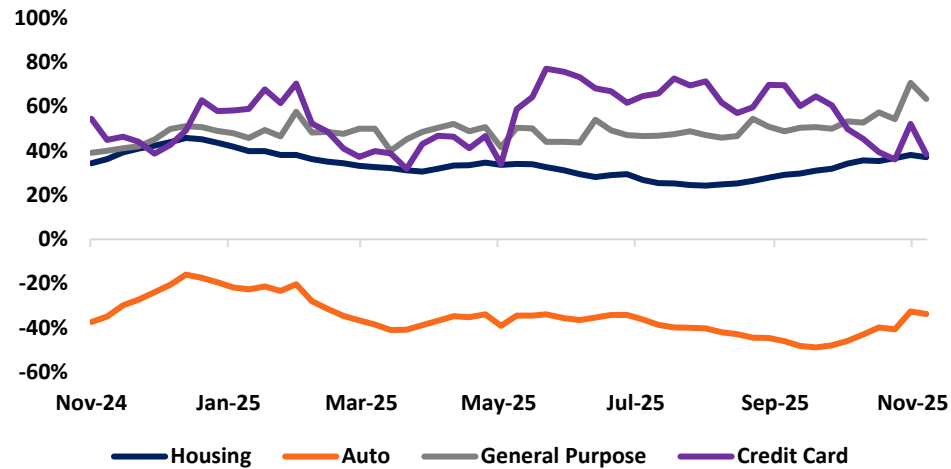
Total Deposit Growth, 13w Annualized



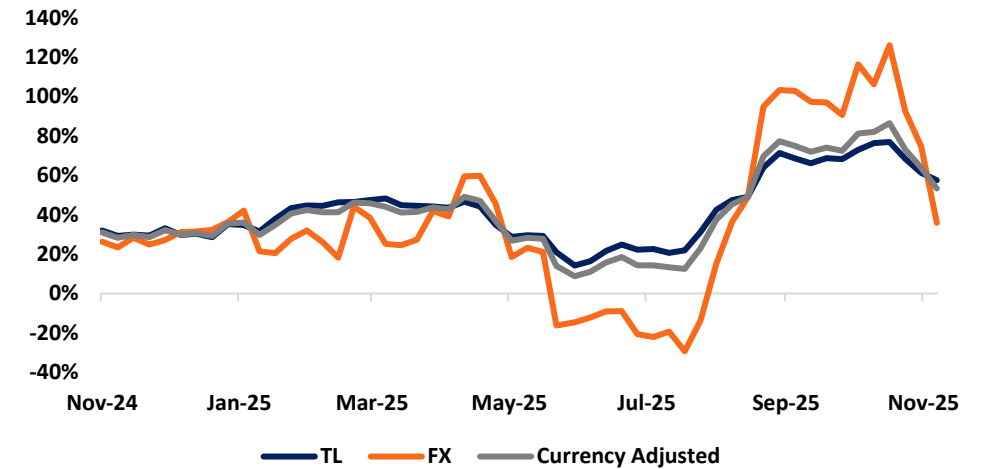
Customer Deposit Growth, 13w Annualized



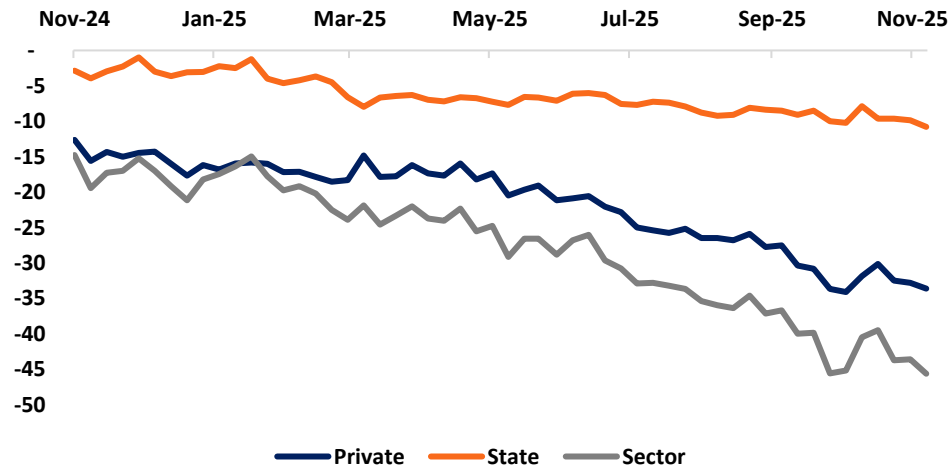
Total Loan Growth, 13w Annualized by Type



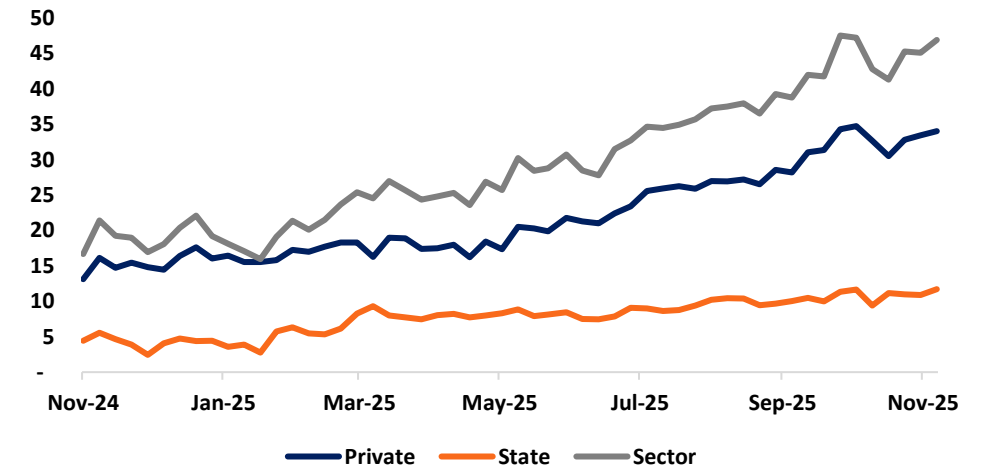
SME Loan Growth, 13w Annualized



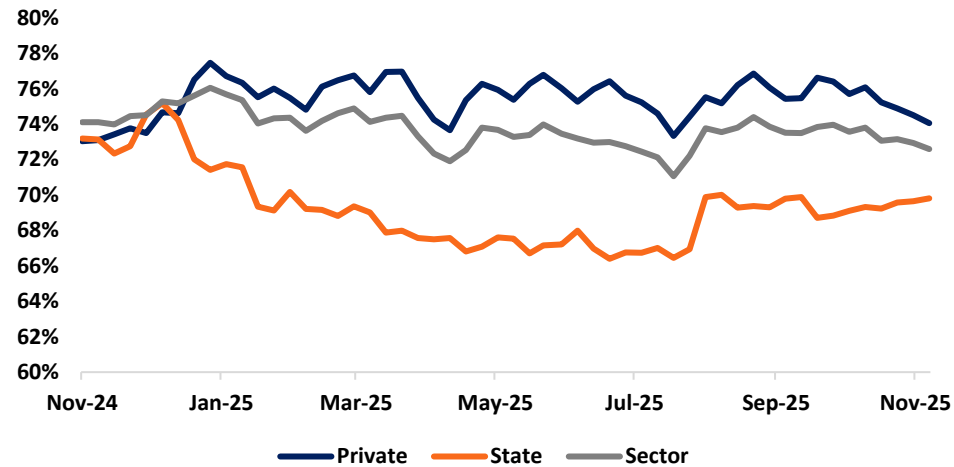
On-Balance FX Position (USD billion)



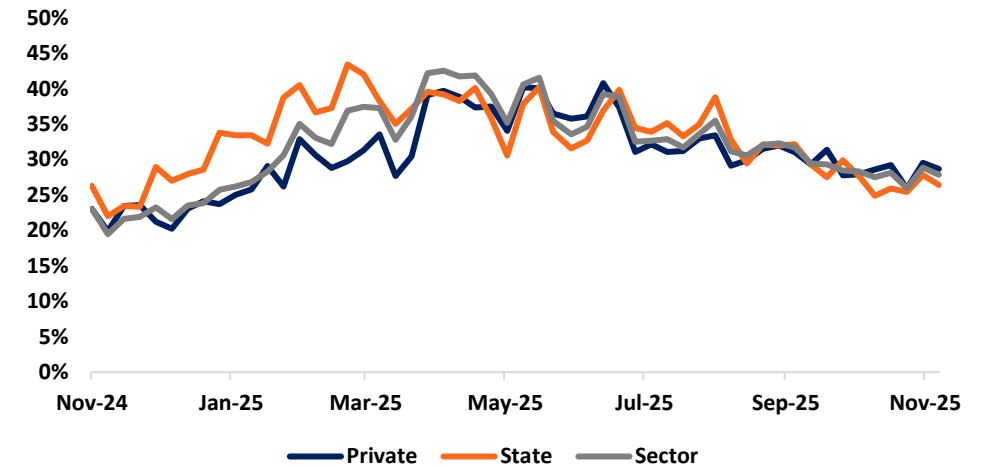
Off Balance FX Position (USD billion)



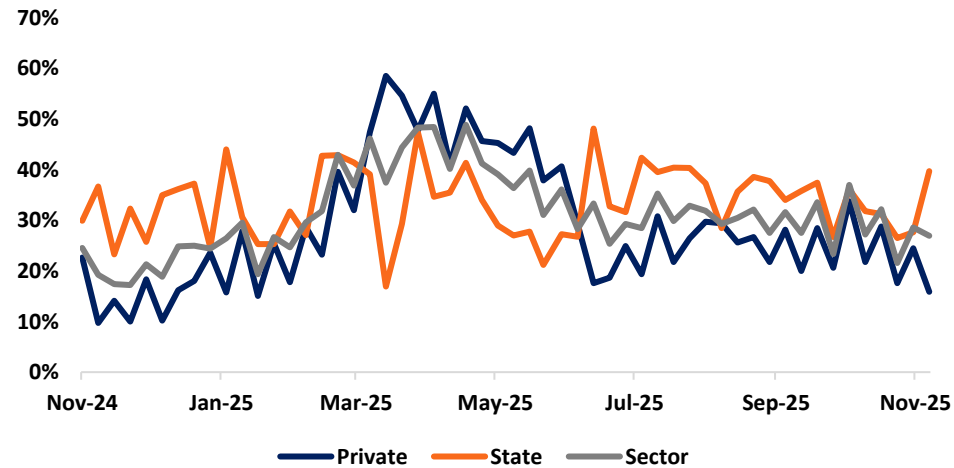
NPL Coverage Ratio



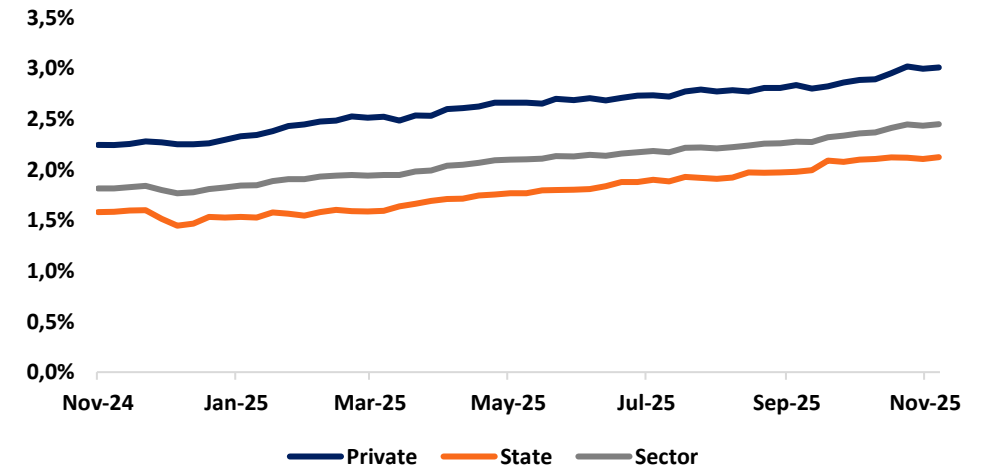
FX Adjusted Loan Growth, 13w Annualized



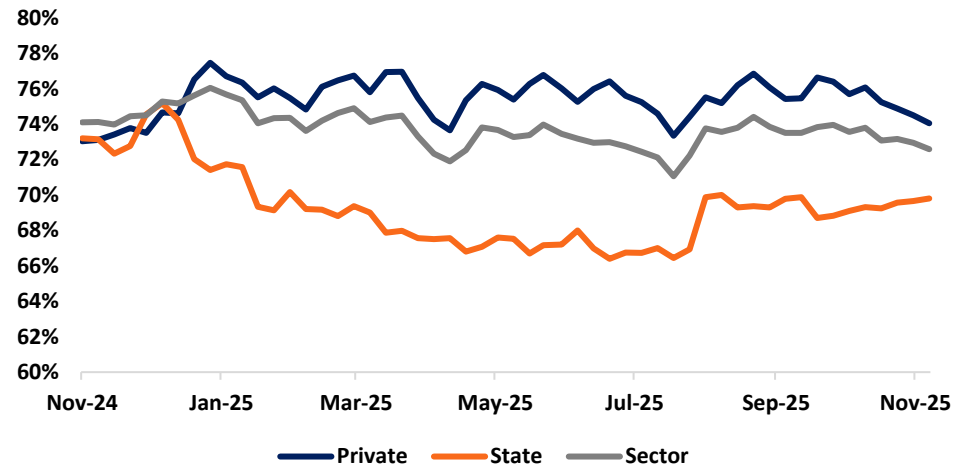
FX Adjusted Deposit Growth, 13w Annualized



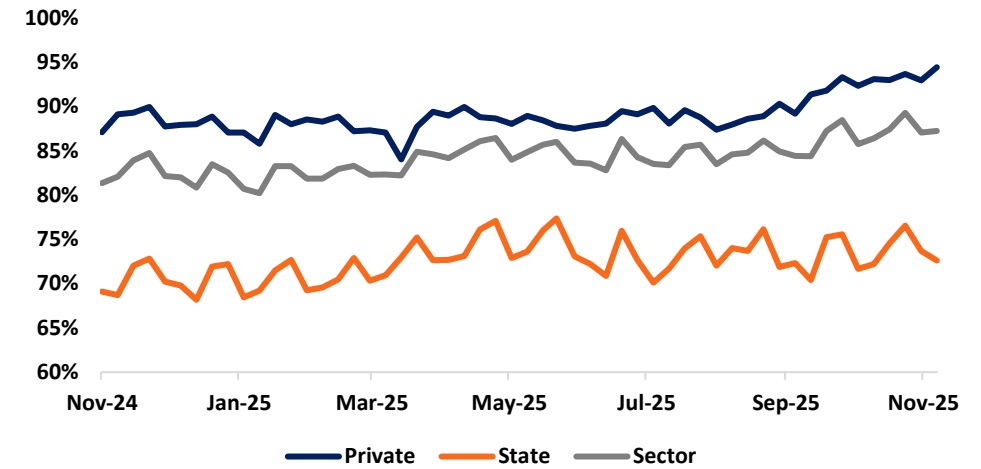
NPL Ratio



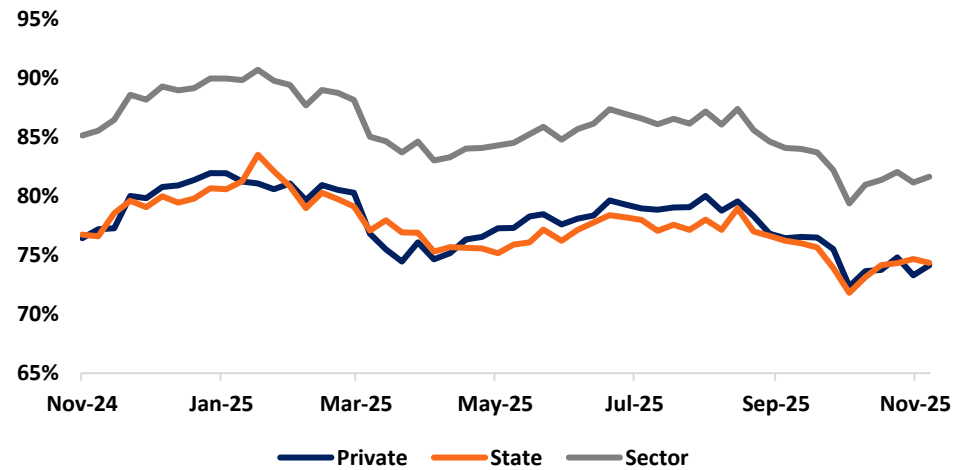
NPL Coverage Ratio



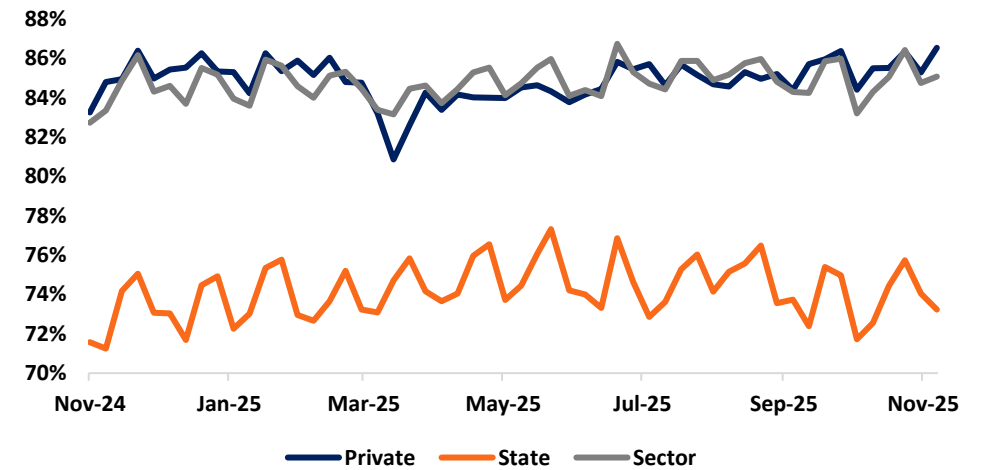
Loan to Deposit Ratio, TRY



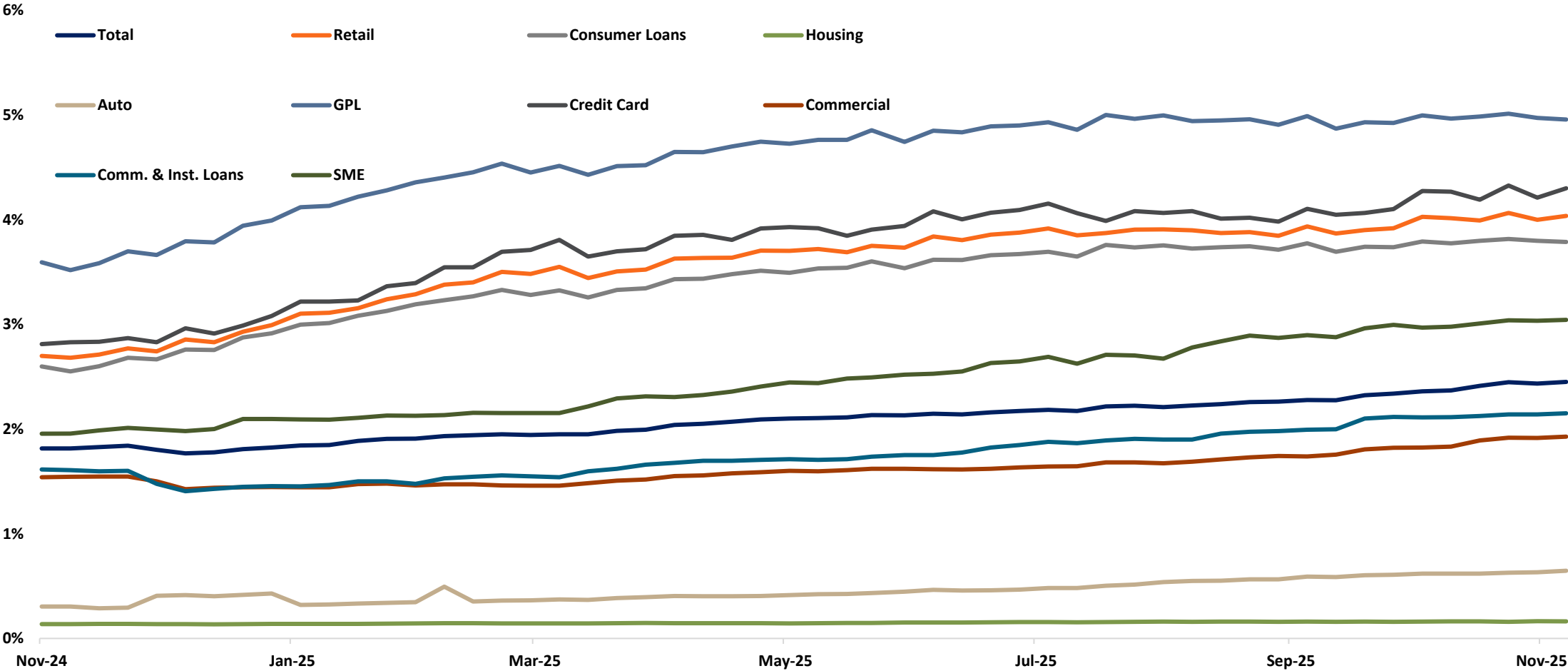
Loan to Deposit Ratio, FX



Loan to Deposit Ratio, Total



NPL Ratios by Loan Type



Disclaimer

The investment information, comments, and recommendations provided here are not within the scope of investment consultancy. Investment consultancy services are provided within the framework of an investment consultancy agreement to be signed between intermediary institutions, portfolio management companies, non-deposit-taking banks, and customers. The comments and analyses provided here are of a general nature. These recommendations may not be suitable for your financial situation and risk and return preferences. Therefore, making investment decisions based solely on the information presented here may not yield results in line with your expectations.

All comments and recommendations consist of forecasts, estimates, and price targets. Changes may be made to these comments and recommendations due to changes in market conditions over time. All views and information in this report have been compiled from sources believed to be reliable, but their accuracy has not been independently verified. Therefore, PhillipCapital Securities Inc. and its employees are not responsible for any damages that may arise from the incompleteness or inaccuracy of this information. For this reason, it is recommended that readers verify the accuracy of the information before acting on the information obtained from these reports, and they are responsible for the decisions they make based on this information. PhillipCapital is not responsible in any way for the lack and inaccuracy of the information. In addition, PhillipCapital and all employees do not have any responsibility for damages arising from information in any way.

There are no known relationships or conditions that could affect the objectivity of the comments and recommendations presented here in a way that could affect the objectivity of the company, and great care and attention have been taken to prepare it in a way that will not give rise to significant conflicts of interest that may arise between our Company and customers.

The information provided here is not an investment recommendation, a buy/sell recommendation for an investment instrument, or a promise of return, and is not included in the scope of Investment Consultancy. This report, in whole or in part, cannot be reproduced, published, or shown to third parties without the written permission of PhillipCapital Menkul Değerler A.Ş. and cannot be used for commercial purposes.